

Description: **TOP CASE CARRIER**

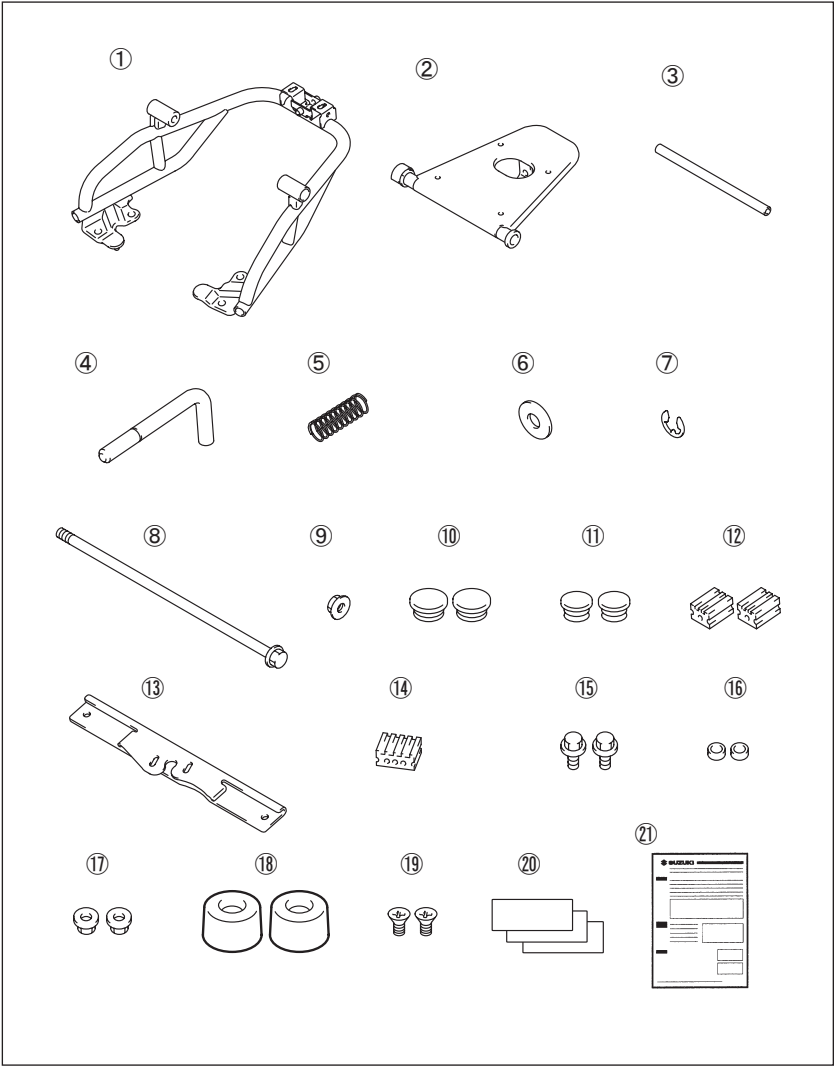
Part Number : 46110-1483\*

Applications: UN125 M3-

Installation Time : 1.5 Hours

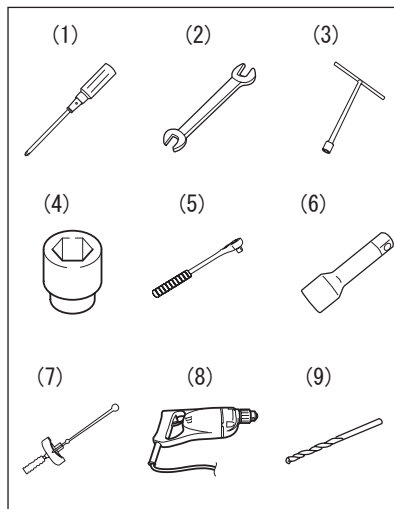
**Contents**

Ref.	Description	QTY
①	Rear Carrier	1
②	Rear Carrier Plate	1
③	Spacer	1
④	Pin	1
⑤	Spring	1
⑥	Washer	1
⑦	E Ring	1
⑧	Bolt	1
⑨	Nut	1
⑩	Plug	2
⑪	Cap	2
⑫	Cushion	2
⑬	Plate	1
⑭	Stopper	1
⑮	Bolt	2
⑯	Spacer	2
⑰	Nut	2
⑱	Balancer	2
⑲	Screw	2
⑳	Label ※ Only for Japanese, Korean and Australian market	3
㉑	Installation Instructions	1

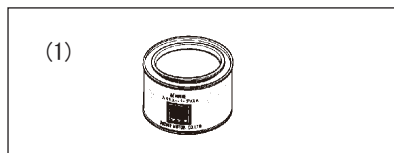


**Tools  
Required**
**Ref. Description**

- |     |                                |
|-----|--------------------------------|
| (1) | ⊕ Driver                       |
| (2) | Open end wrench<br>(10, 12 mm) |
| (3) | T wrench (10, 12 mm)           |
| (4) | Socket (10, 12, 14 mm)         |
| (5) | Ratchet handle                 |
| (6) | Extension                      |
| (7) | Torque wrench                  |
| (8) | Electric Drill                 |
| (9) | Drill (φ 10)                   |


**Items  
Provided  
by the  
Customer**
**Ref. Description**

- |     |  |
|-----|--|
| (1) | ECSTAR SUPER<br>GREASE (A) or equivalent<br>[Recommended<br>99000-25480] |
|-----|--|


**Tightening  
Torque**

Tighten bolts to the torque indicated in the right table as standard value unless otherwise explicitly specified.

The value shows conventional on "4" marked bolt tightening torque. For other bolts not listed in the table, refer to the service manual.

Diameter (mm)	Tightening Torque		
	N·m	kgf-m	lbf-ft
5	3.0	0.3	2.0
6	5.5	0.55	4.0
8	13.0	1.3	9.5
10	29.0	2.9	21.0


**Important**
**⚠ WARNING / ⚠ CAUTION / ⓘ NOTICE / ⓘ NOTE**

Please read this manual and follow its instructions carefully. To emphasize special information, the symbol **⚠** and the words **WARNING**, **CAUTION**, **NOTICE** and **NOTE** have special meanings. Pay particular attention to messages highlighted by these signal words:

**⚠ WARNING**

Indicates a potential hazard that could result in death or serious injury.

**⚠ CAUTION**

Indicates a potential hazard that could result in minor or moderate injury.

**NOTICE**

Indicates a potential hazard that could result in vehicle or equipment damage. ⇒ ⓘ

**NOTE**

*Indicates special information to make maintenance easier or instructions clearer.* ⇒ ⓘ

**Precautions  
for  
Installation**

1. Check that the kit includes all the parts listed on the first page.
2. Check each part in the kit for scratches or any form of damage.
3. Park the vehicle on a level ground.
4. Remove the ignition key from the switch and store it in a safe place.
5. Disconnect the negative (–) cable from the battery.
6. Protect any items removed or to be installed from scratches by placing them on a soft cloth first before putting them on the ground.
7. Use care not to cause any damage to the body of the vehicle during installation of the accessory.



**Be sure to refer to the un125 service manual, when removing or installing STD parts.**

**\* STD parts = Component parts of SUZUKI motorcycle**

**Installation**

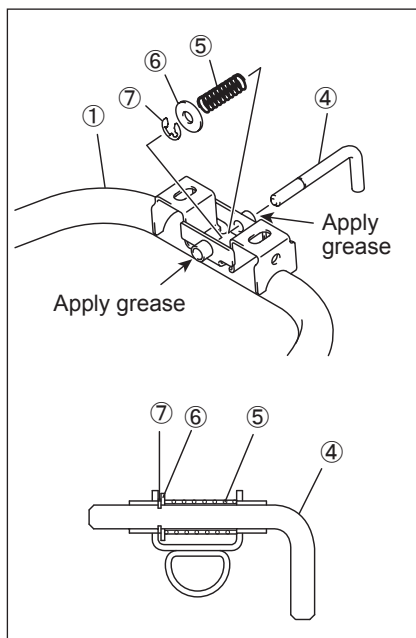
1. Apply grease to the inside of both sides of insertion hole for the Pin ④ on the Rear Carrier ① .  
Assemble the Pin ④ , Spring ⑤ , Washer ⑥ and E-ring ⑦ to the Rear Carrier ① .

**[Recommended:**

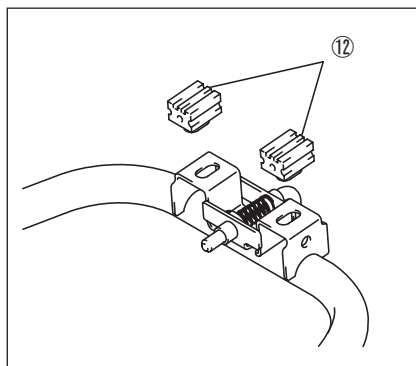
**ECSTAR SUPER GREASE (A)]**



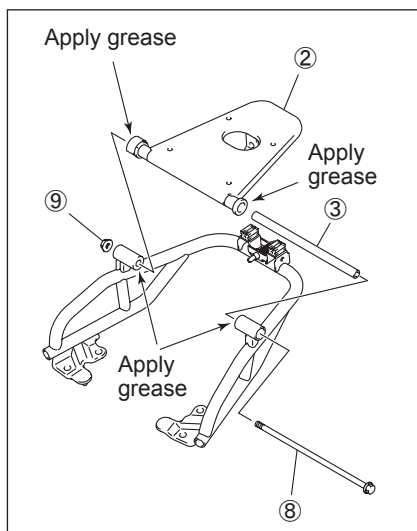
**Fit the E-ring ⑦ to the groove of the Pin ④ .**




2. Install the cushion ⑫ to the Rear Carrier ① .

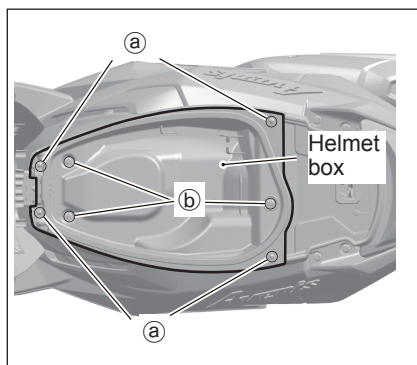


3. Apply grease to the inside and the edge of insertion hole for the Spacer ③ on the Rear Carrier Plate ② , and insert the Spacer ③ to the Rear Carrier Plate ② .
4. Apply grease to the inside of bosses on the Rear Carrier ① , and temporarily assemble the Rear Carrier Plate ② to the Rear Carrier ① by using the Bolt ⑧ and Nut ⑨ .



5. Remove the bolt ① and screw ② , and remove the helmet box.


<p><i>The bolt ① and screw ② will be reused.</i></p>



6. Remove the bolt ③ and remove the pillion rider handle. Remove the fuel tank cap cover as the step ① and ② in the illustration.

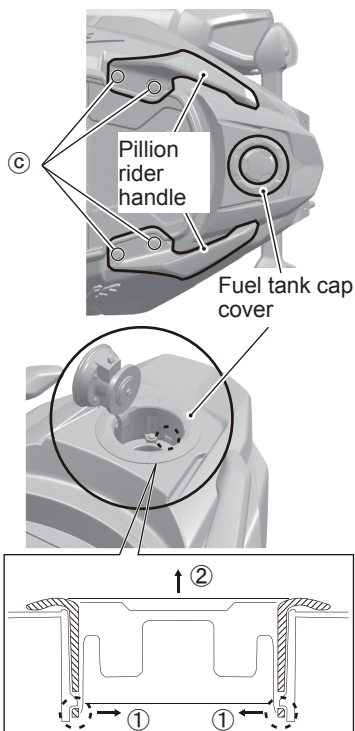


*The bolt ③ will be reused.*

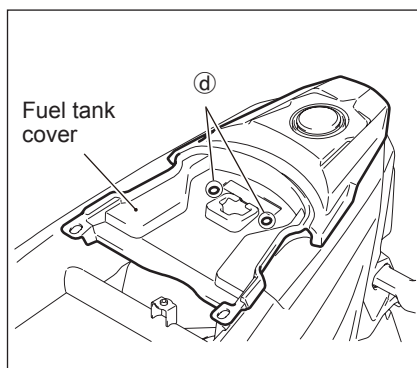
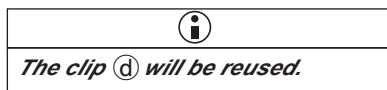
### **WARNING**

**Gasoline is very flammable and may cause fires if handled incorrectly.**

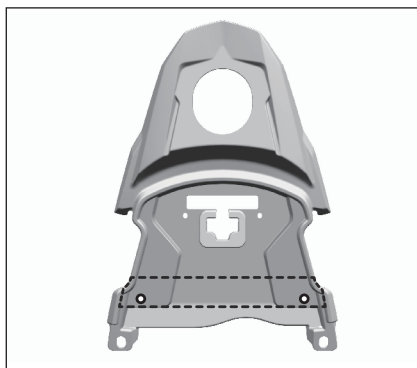
- Work in a well-ventilated area.
- During disassembling, take care to minimize spillage of gasoline.
- Spilled gasoline should be wiped off immediately.
- Before opening the fuel tank cap, touch a metal part of the motorcycle body to eliminate static electricity from your body. If you are charged the static electricity, spark by discharging may cause the gasoline to catch fire.



7. Remove the clip ① and remove the fuel tank cover.

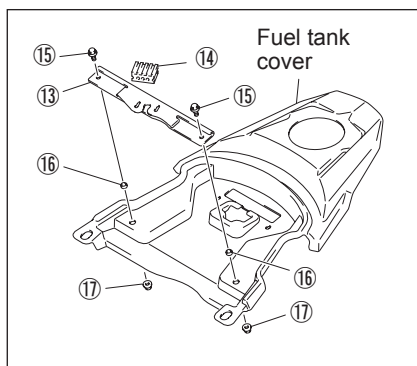


8. Cut a pattern in page 12 and put it to the fuel tank cover as illustration and mark drilling points. Put the Plate ⑬ to the drilling points, check their position and drill  $\Phi 10$  holes.




9. Assemble the Cushion ⑭ to the Plate ⑬, and install the Plate ⑬ to the fuel tank cover by using the Bolt ⑮, Spacer ⑯ and Nut ⑰.

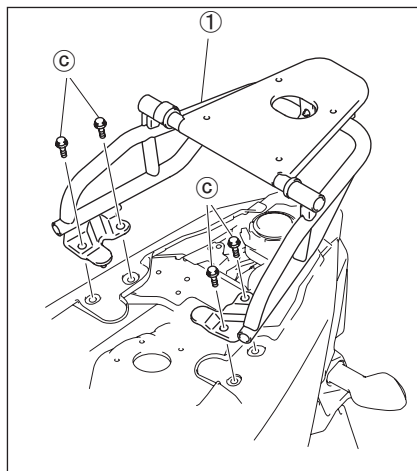
 Nut ⑰ : 10N·m  
(1.0 kgf-m, 7.5 lbf-ft)





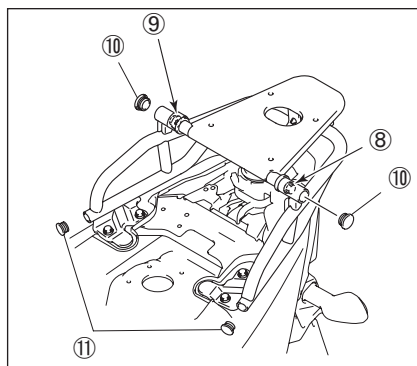
10. Install the Rear Carrier ① to the motorcycle by using the removed bolt ③ in the step 6.

 Bolt ③ : 23N·m  
(2.3 kgf-m, 17.0 lbf-ft)



11. Tighten the Bolt ⑧ and Nut ⑨, and install the Plug ⑩ and Cap ⑪.

 Nut ⑨ : 60N·m  
(6.1 kgf-m, 44.5 lbf-ft)

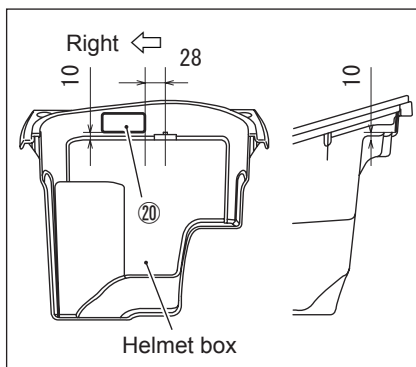


12. Install the helmet box which was removed in the step 5 to the motorcycle.
13. Install the fuel tank cover and fuel tank cap cover which were removed in the step 6 and 7 to the motorcycle.

14. Attach the Label ⑳ to the inside of the helmet box.

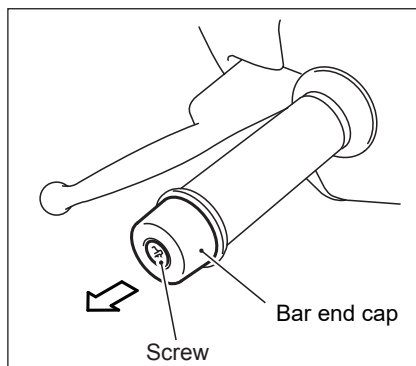
\*Only for Japanese, Korean and Australian market.

- Align the right edge of the Label ⑳ with 28mm line to the right from the center of screw in the rear of the helmet box.
- Align the lower edge of the Label ⑳ with 10mm line to the upper from the difference in the rear of the helmet box.

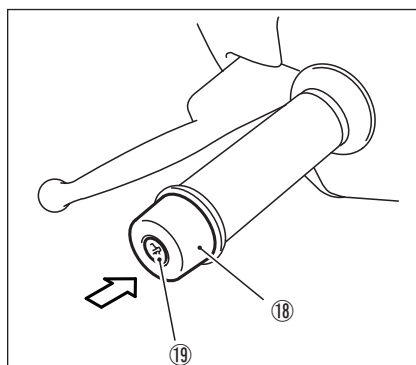


***In case of combination with the Knuckle Cover [57300-148\*\*] (separately sold), step 15 & 16 below aren't needed. Refer to installation instructions for the Knuckle Cover.***

15. Remove the bar end cap from RH and LH handle bar end.



16. Install the Balancer ⑱ by using the Screw ⑲ to RH and LH handle bar end.



**Handling  
precautions****⚠ WARNING**

Exceeding the maximum loading capacity can cause loss of control.

Never exceed the maximum loading capacity.

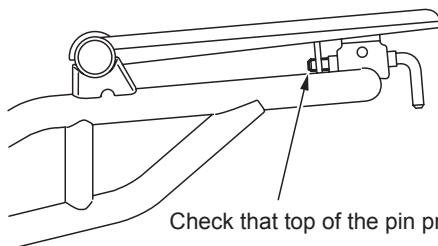
Maximum loading capacity : 6 kg (13.2 lbs)



This top case carrier is designed for exclusive use of top case. Please don't use for other purpose than mounting topcase.



When fixing the rear carrier plate, push it down tightly, and check that top of the pin projects from the locking plate on the rear carrier plate as illustration and the plate is locked.



*Please keep this manual with owner's manual for motorcycle carefully.*

Pattern  
paper

